

# Working with sub 25nm MLC in Enterprise

## Going Beyond the Media

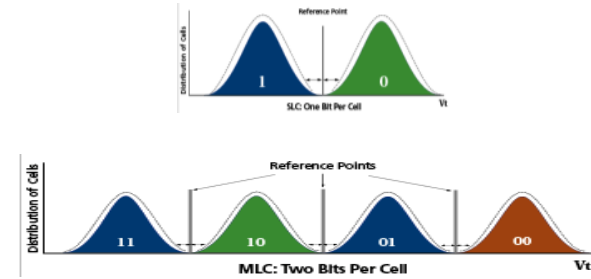
Scott Shadley

Sr. Product Marketing Manager – Enterprise SSD

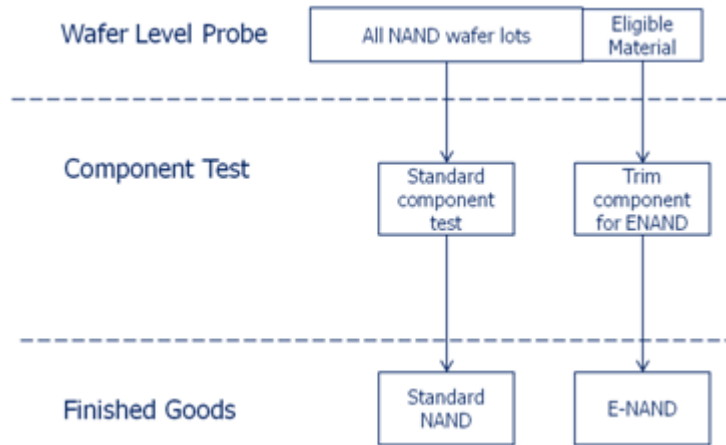


- A brief look back at MLC technologies
- The difference between eMLC and eSSD
- Stopping the Cycle count focus
- Matching the right MLC Media with the need
- What is next on the NVM Enterprise Horizon

# A Brief History Lesson



- Many Classes of NAND exist today  
SLC, MLC, cMLC, eMLC, TLC...
- eMLC = Endurance not necessarily Enterprise



A one time trim change to tProg is not enough anymore for eSSD

- Wafer binning helps, but more is needed

# How eMLC becomes an eSSD

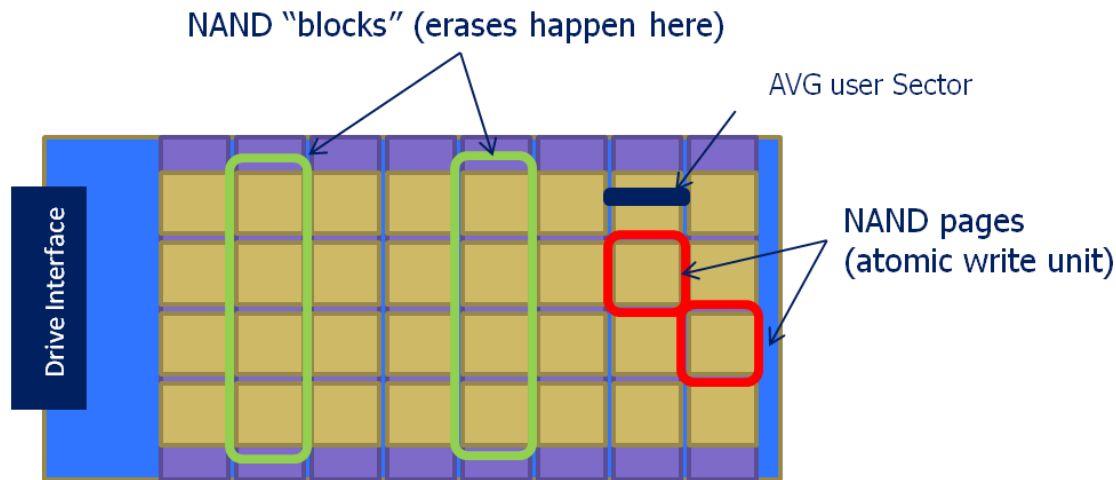
- There are many ways to “spin” an SSD
  - Ref Design, ODM, 3rd Party, Organic
- eMLC NAND cannot define the eSSD alone
  - Over provisioning, Data path, Power backup
  - Garbage collection, Wear leveling



***Even these features are not enough to work***

# The Real Issues for SSD to Fix

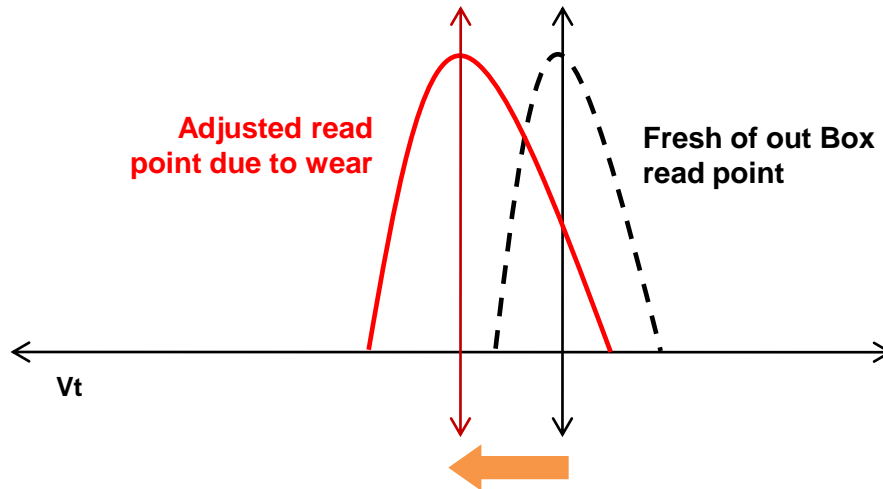
Working in a Sector based environment  
Blocks and Pages complicate and dictate



*There will always be a need to deal with disparity  
...and it is only going to get worse!*

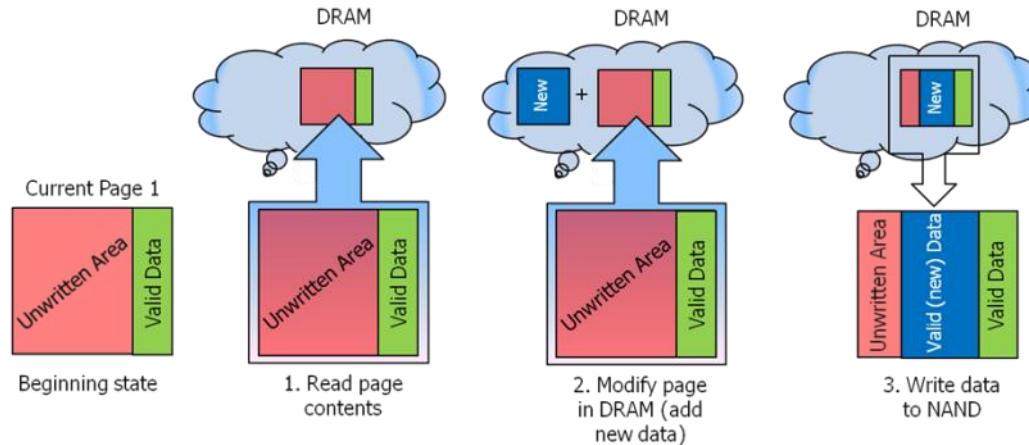
# The Read Path

- Not surprisingly, FW is king over NAND
  - Working with NAND is more than just SMT now
- Features that require NAND expertise and ownership
- A desire for making NAND always provide good data



# The Program Path

- Making certain to ensure data is Non-Volatile



- Using technology tools to minimize Write Amplification and unnecessary wear
- Provides Longer life, regardless of media

# Beyond Cycle Count

- 3K, 30K, 100K – More is better, BUT...

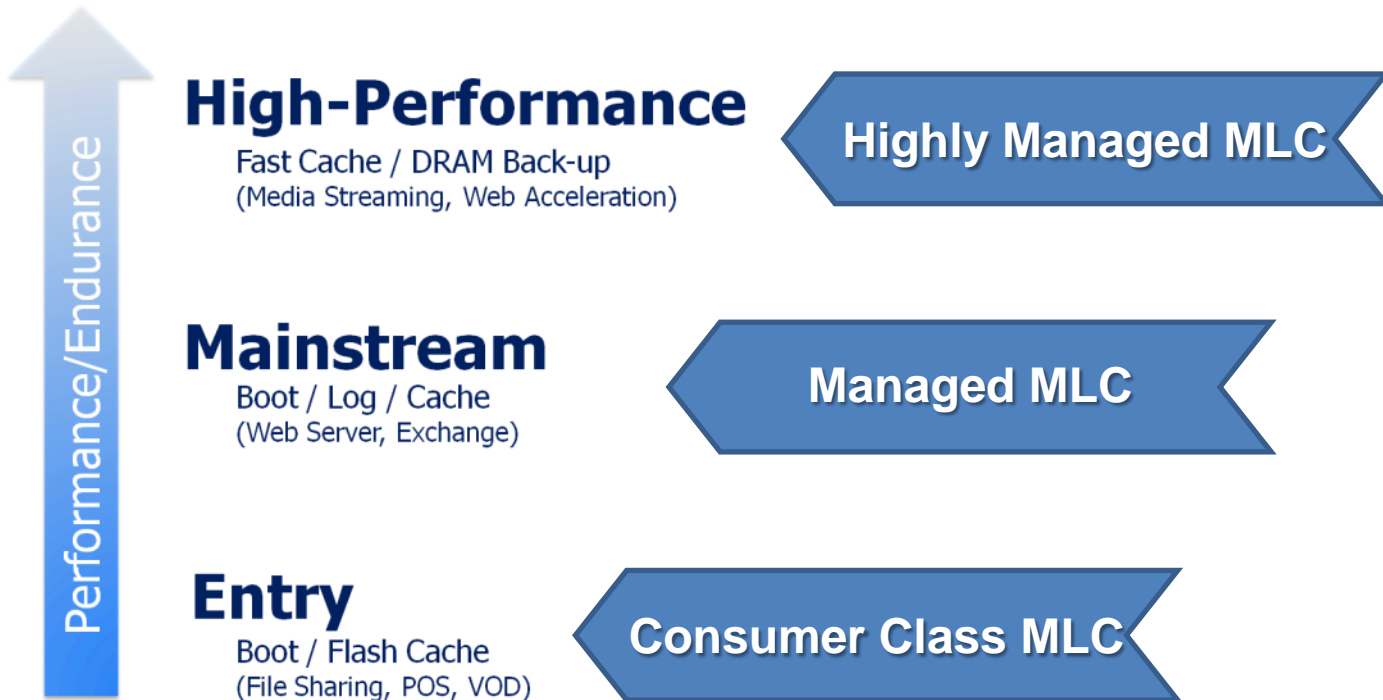


- Misused data management will still leave your drive short on life
- Having all the right “Band-Aids” is key...



# Choosing the Right SSD

- More and more choices are available
- Ensure the right Price/Performance

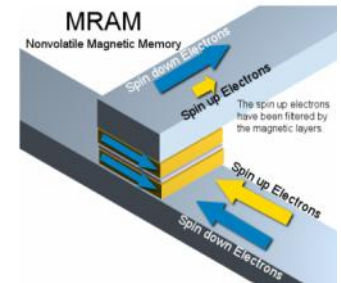
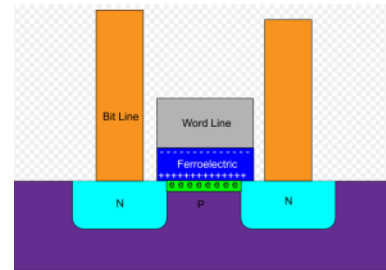
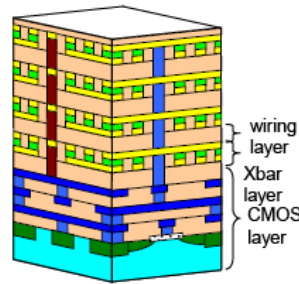
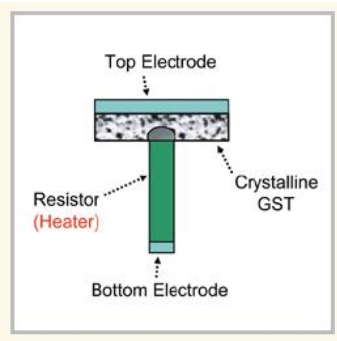




**A Preview: "Event Horizon"**

# Next Great SSD Technology...

- Sooner than we all realize, NAND needs help
- What are the choices?



- Who is leading the pack?

Micron mass-produces Phase Change Memory

HP's faster-than-flash memristor at least TWO years away

Everspin Technologies Enables Spin-Torque MRAM Ecosystem

# Defining the Future of eSSD

- “Off the shelf” is no longer valid for eSSD
- Working with new technologies NOW is core
- Owning the process is key
- Beyond the “Final Frontier”





- eMLC does not make an eSSD
- Raw media solutions are not enough today
- Controller technologies will rule the future
- NAND has legs left, but technology is coming
- Ownership of media & organic design is key!

# Scott Shadley

- Sr. Product Marketing Manager, NAND Solutions Group (NSG), Enterprise SSD Products, Micron Technology, Inc.
- Facilitates Marketing efforts for Micron Enterprise SSD adoption and creation of new products to meet the growing market need
- 6 year history focused in Enterprise SSD Development
- 15 years in Semiconductor Design and Development
- Earned a BS degree in Electrical Engineering - Device Physics from Boise State University
- Earned a MBA in Marketing from University of Phoenix